



10'x16' Storage Shed Plan

Compare our Free vs. Premium plan

This perfectly designed plan will guide you through the entire process of building your very own shed for any backyard or garden.



Check out the benefits you would get with our **premium edition**:

Features	Free plan	Premium edition
Steps count	10	20
Illustrations for Each Step	✓	✓
Print Ready	✓	✓
Step By Step Instructions	✓	✓
Full Materials and Cuttings List	✗	✓
Additional Illustrations	✗	✓
Additional Blueprints	✗	✓
Tools List	✗	✓
Fastening Elements List	✗	✓
Technical Support	✗	✓

BUY NOW

10'x16' Storage Shed Plan Material List

Site Preparation

- Concrete
- Bricks

Bottom Frame

- Pressure-Treated Lumber
- Plywood

Wall Frames

- Pressure-Treated Lumber

Shed's Roof

- Pressure-Treated Lumber
- Pressure-Treated Board
- Plywood
- Building paper
- Asphalt shingles
- Metal drip edge

Shed's Door

- Pressure-Treated Lumber
- Wood siding boards
- Plywood

Walls Exterior Siding

- Pressure-Treated Lumber
- Wood siding boards

Top Frame

- Pressure-Treated Lumber

Fasteners & Hardware

- Door hinges
- Door pulls
- Surface bolt
- Galvanized nails
- Wood screws

STEP 1

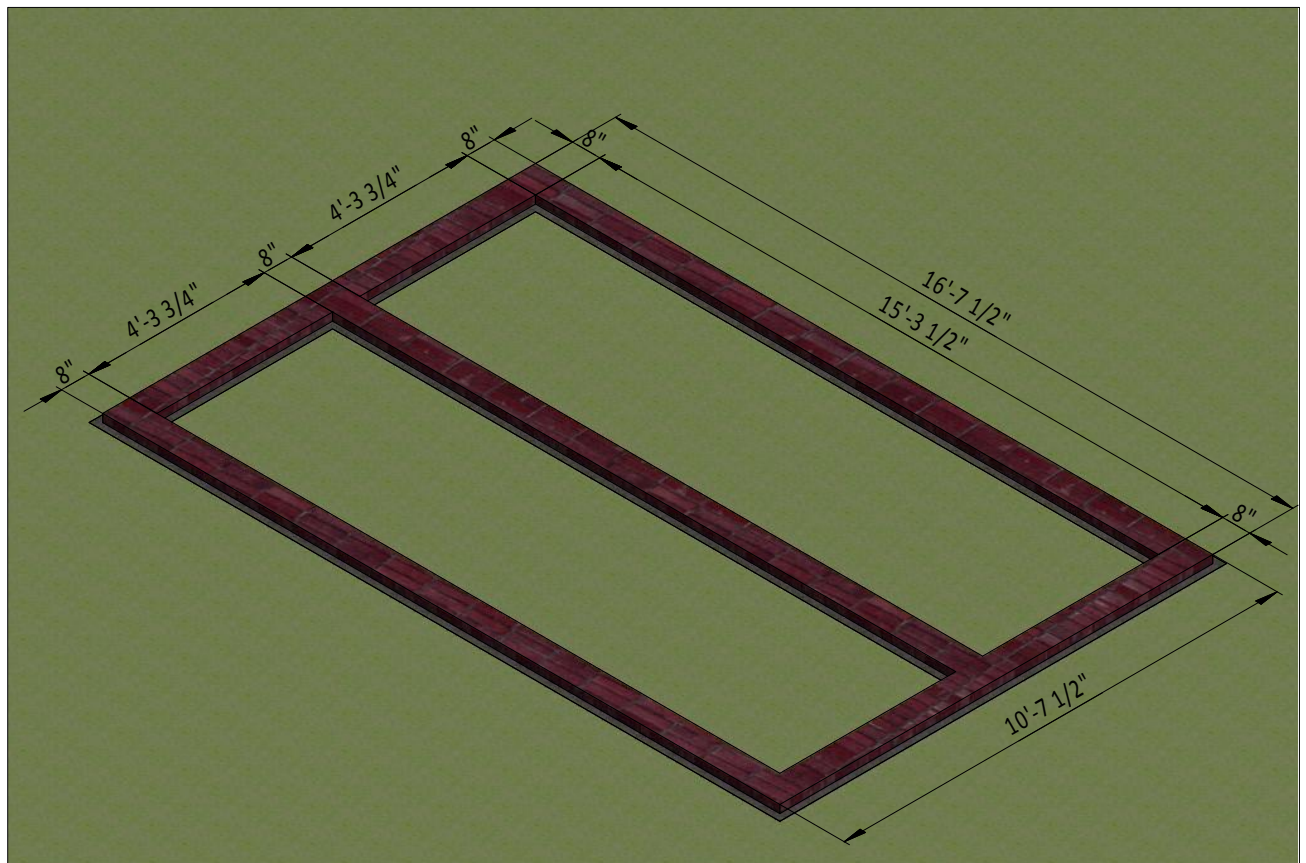
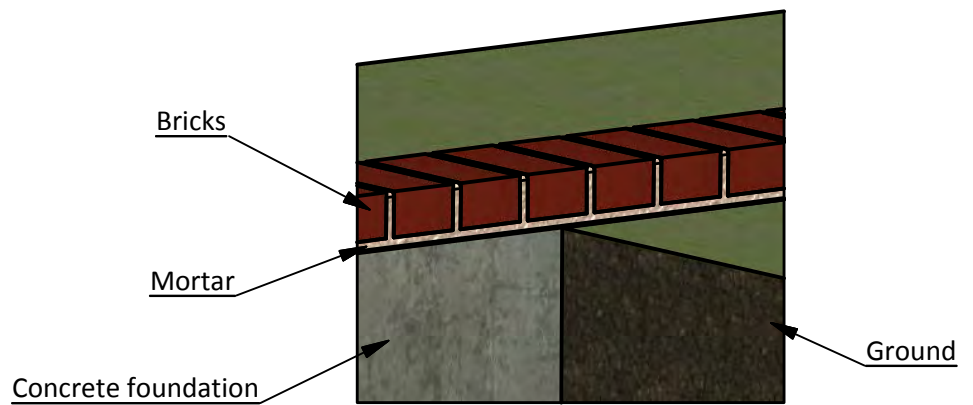
Foundation Preparation

1.1 Clear the area where you want to build the shed and layout for the foundation. Use the below illustration as a guide.

1.2 For the foundation, dig the trenches at least 1' wide and 1' deep.

1.3 Fill the trenches to ground level with concrete and let cure, or harden. Since curing times vary between brands, read the packaging for recommended curing times.

1.4 Once the concrete has cured, use standard-sized bricks and lay them across the foundation. You will need roughly 200 bricks for this step.



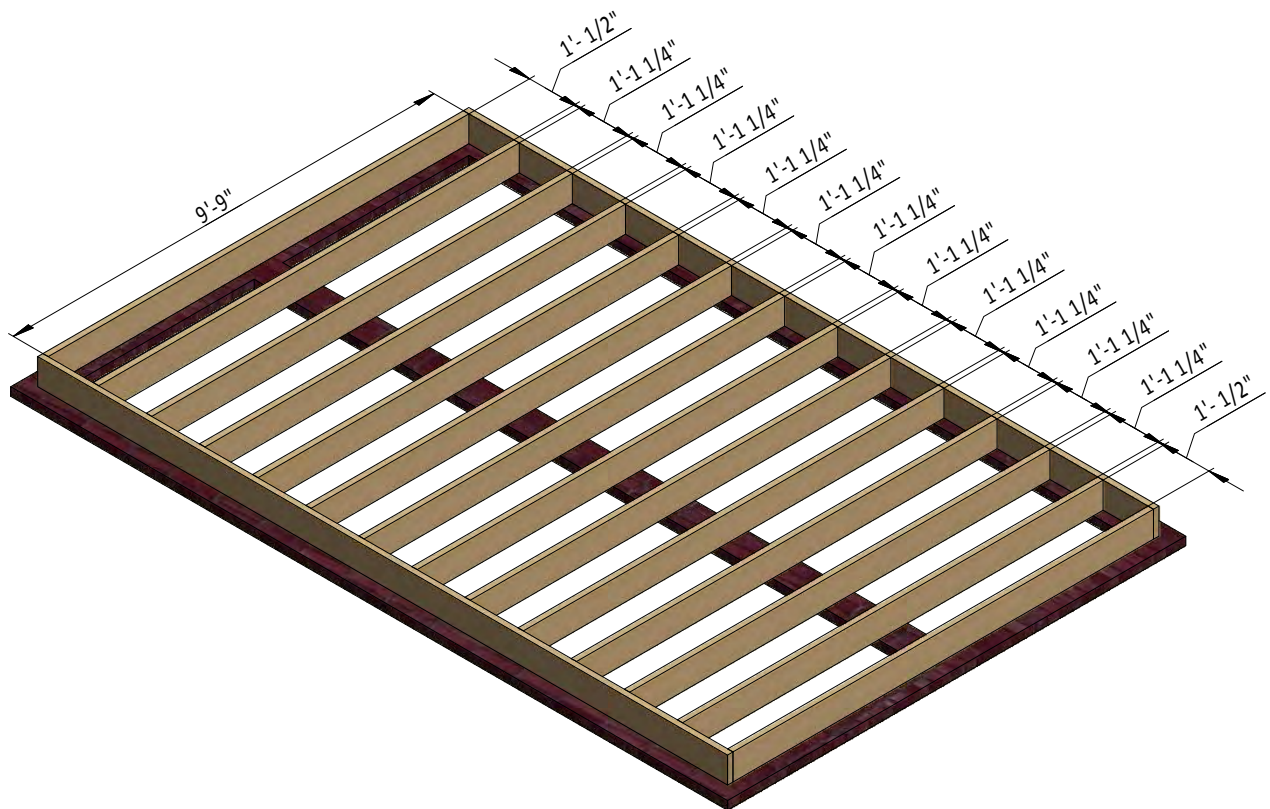
STEP 2

Framing the Floor

2.1 Assemble the frame using 1 1/2" x 7 1/4" treated lumber. You will need 12 boards cut to 9'-9" that will be the floor joists.

2.2 Use 8x5" flat head Phillips wood screws to secure the joists.

2.3 Check the corners with a square to make sure they are 90°.



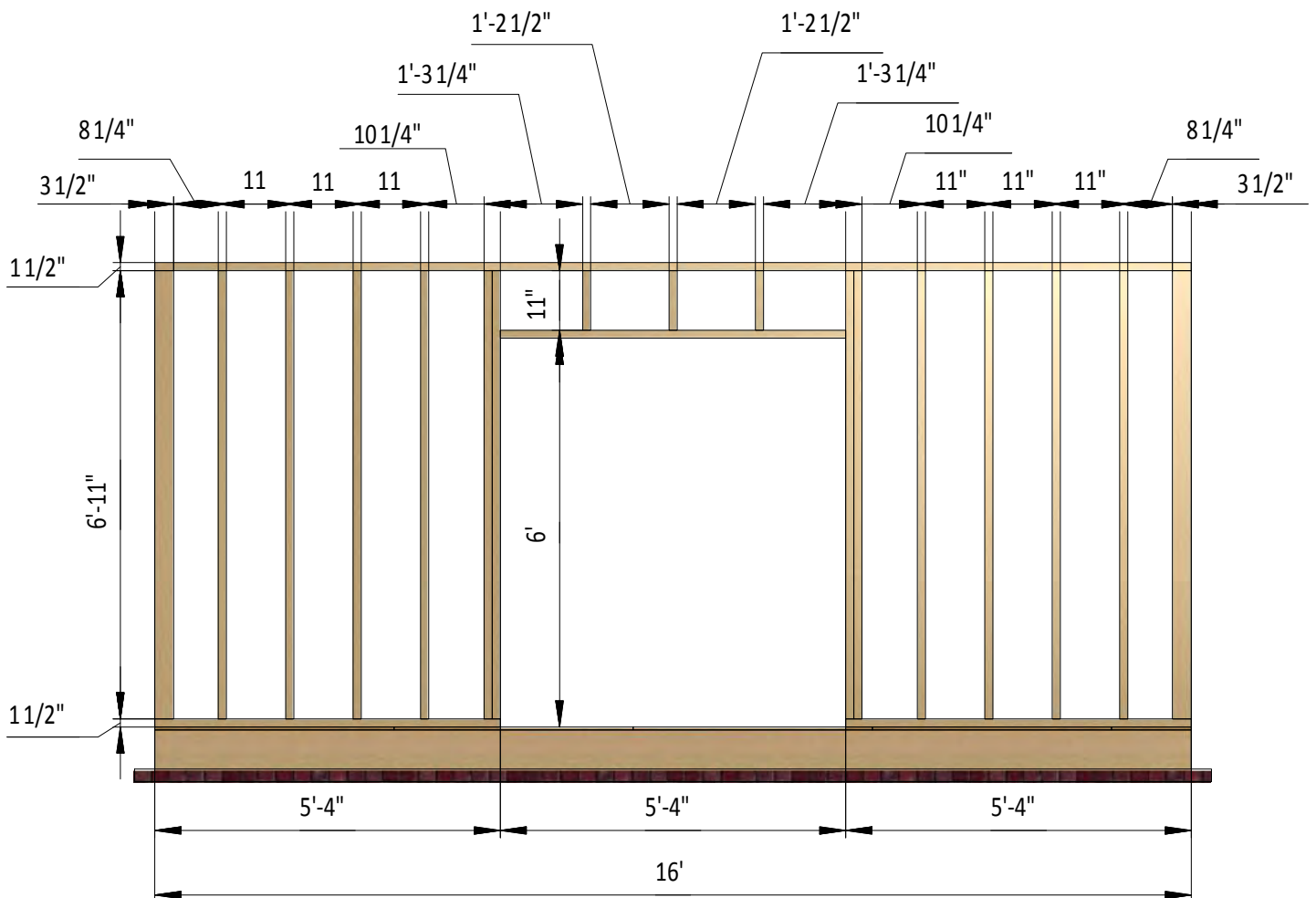
STEP 3

Assemble Front Wall Frame

3.1 Using 1 1/2" x 3 1/2" and 3 1/2" x 3 1/2" treated lumber, construct the front wall frame. using the drawing below as a guide. You will need three boards cut to 11" for the cripple studs, be the cripple studs, one board cut to 5'-4" for the door header, 14 boards cut to 6'-11" 6'-11" for the studs, two boards cut to 5'-4" for the bottom plates and one board cut to 16' for the top plate for the garden or storage shed.

3.2 Join the beams with 2x4" flat head Phillips wood screws.

3.3 Using the square of your choice, check the corners to make sure they are all 90° .



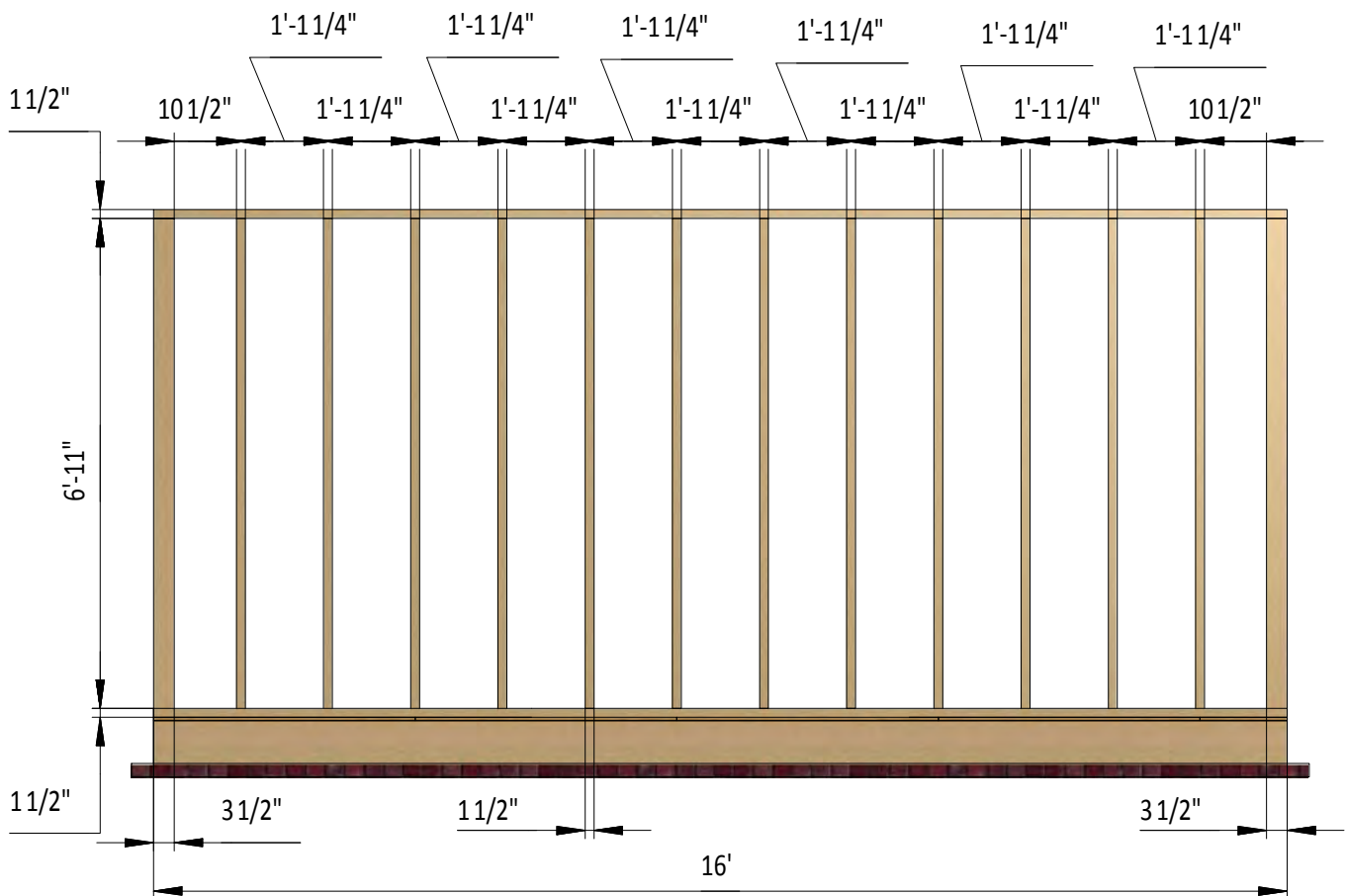
STEP 4

Assemble Back Wall Frame

4.1 Using 1 1/2" x 3 1/2" and 3 1/2" x 3 1/2" pressure-treated lumber, build the back wall frame using the illustration below as a guide. You will need 14 boards cut to 6'-11" that will be the studs and two boards cut to 16' that will be the top and bottom plates.

4.2 Use 2x4" wood screws to connect the beams.

4.3 Using a square, check the corners to make sure they are 90°.



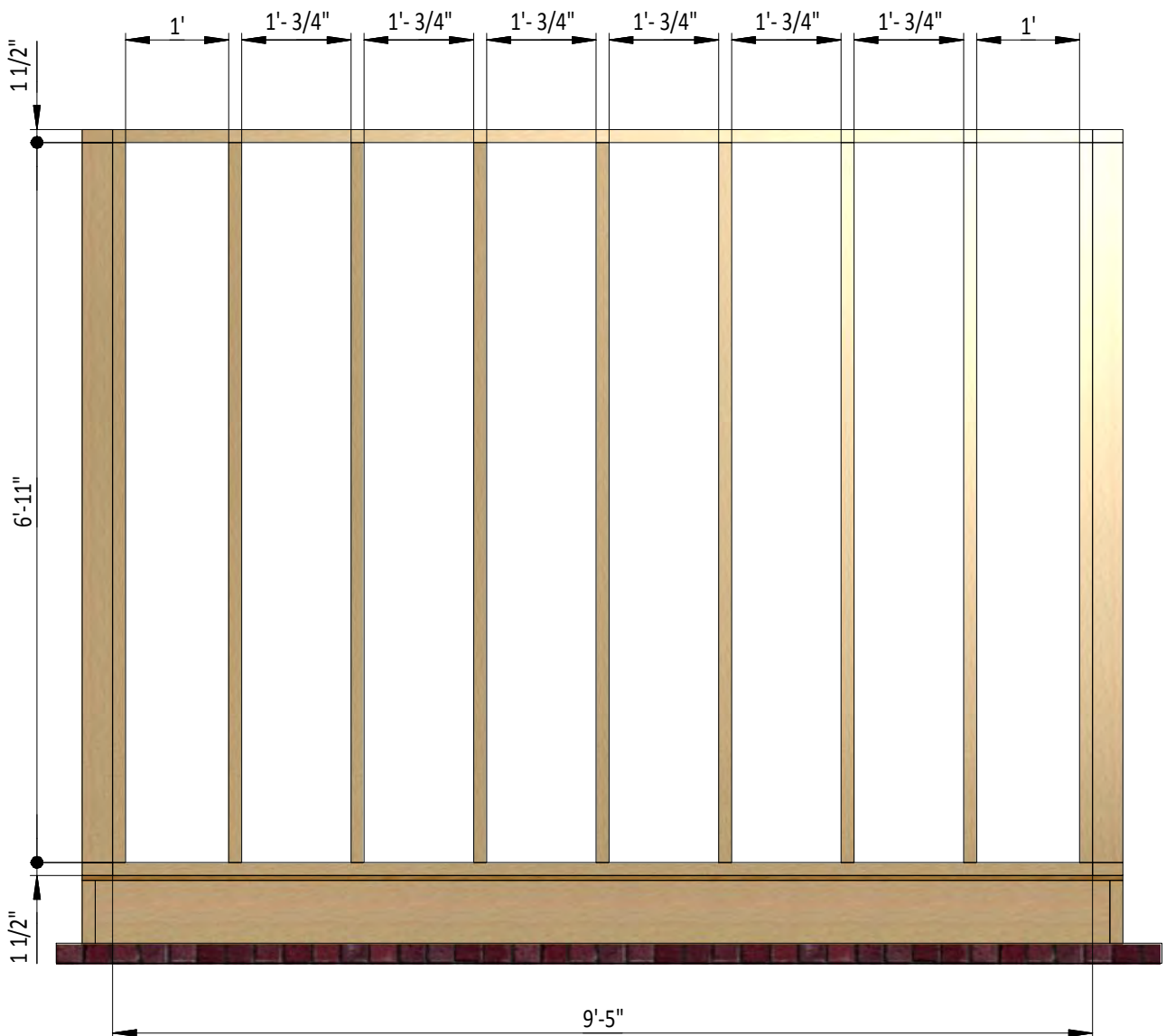
STEP 5

Assemble Left and Right Wall Frames

5.1 Using 1 1/2" x 3 1/2" pressure-treated lumber, construct the wall frames using the drawing below as a guide. You will need nine boards cut to 6'-11" for the wall studs and two boards that are 9'-5" for the top and bottom plates.

5.2 Connect the beams with 2x4" wood screws.

5.3 Using the square of your choice, check the corners to verify that they are 90°.



STEP 6

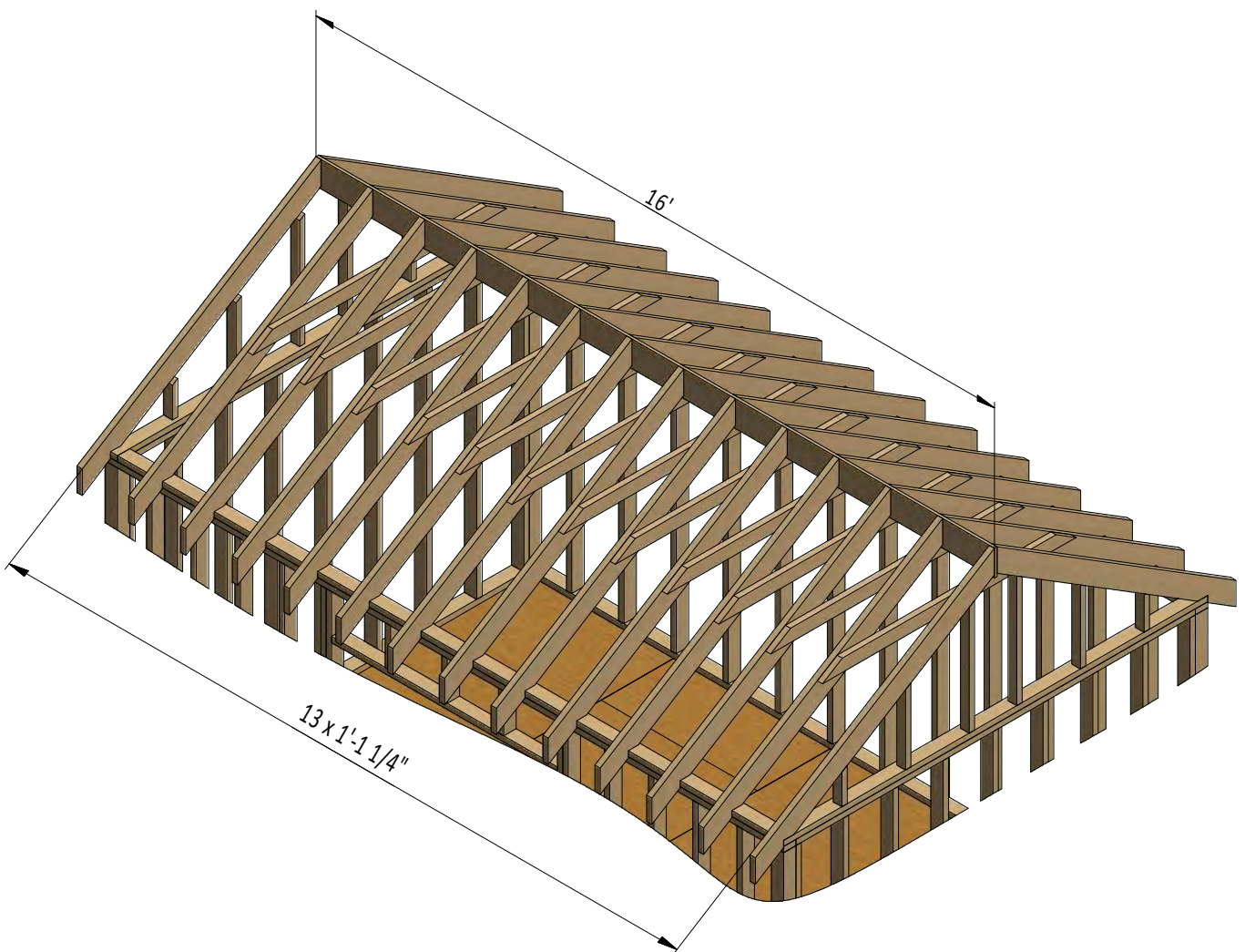
Assemble the Roof Frame

6.1 Using 1 1/2 " x 5 1/2 " pressure-treated lumber, cut 28 rafters 6'-11" long according to the dimensions.

6.2 Using 1 1/2 " x 3 1/2 " pressure-treated lumber, cut twelve collar ties 5'-11 3/4" long according to the dimensions.

6.3 Using 3/4 " x 7 1/4 " pressure-treated board, cut the ridge board 16' long as shown below.

6.4 Connect the beams with 2x3" Phillips flat head wood screws.

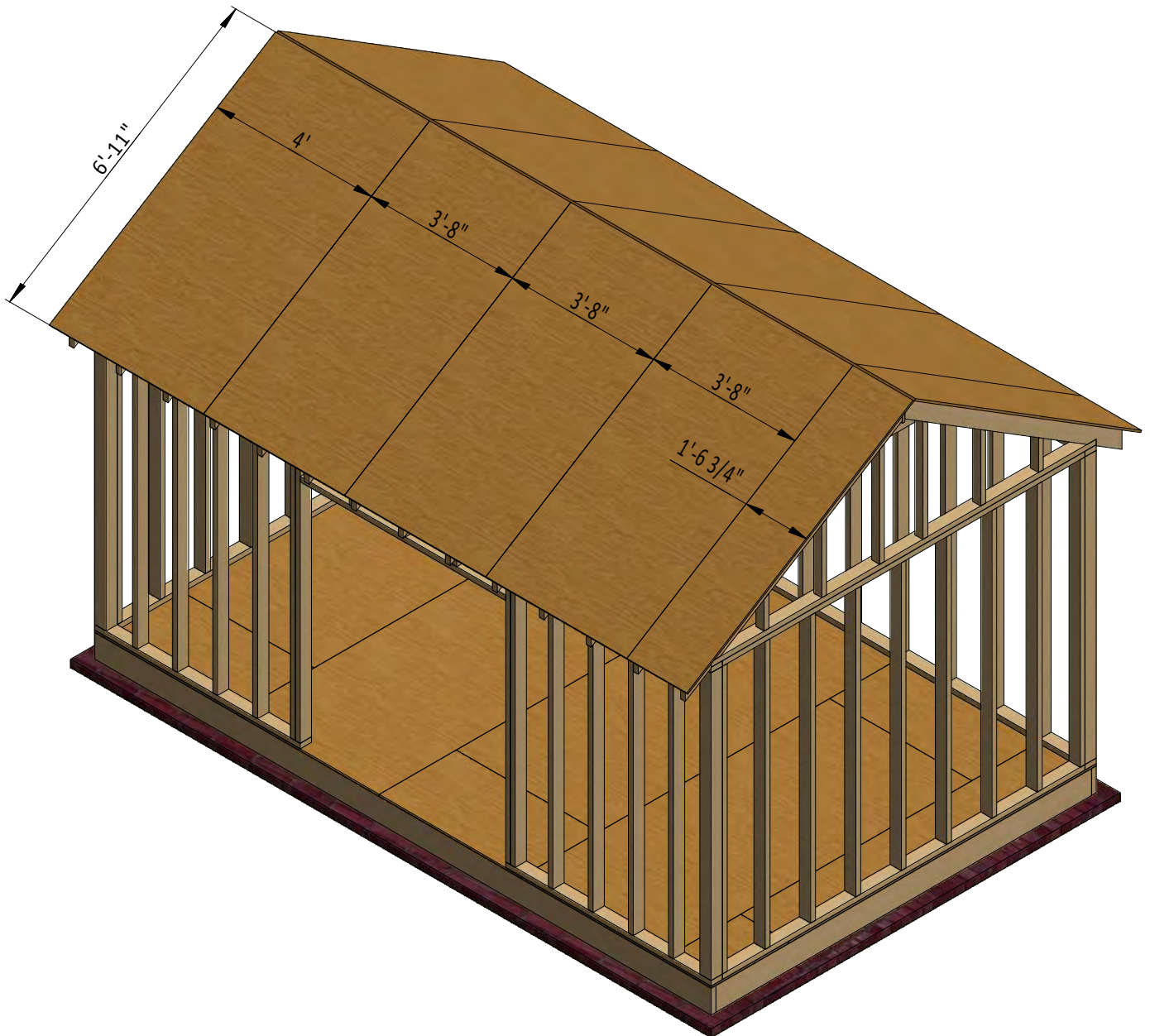


STEP 7

Install Plywood for the Roof

7.1 Cut sheets of 9/16" plywood for the roof decking using the drawing below as a layout guide. You will need to cut two 4' x 6'-11" sheets, six 3'-8" x 6'-11" sheets and two 1'-6 3/4" x 6'-11" sheets.

7.2 Secure the plywood with 2" flat head Phillips wood screws.



STEP 8

Assemble and Install Shed Doors

8.1 Build the door frames for the shed using 1 1/2 " x 3 1/2 " treated lumber and secure with 5" Phillips wood screws. You will need two boards cut to 5'-11 3/4" that will be the vertical girts and two boards cut to 2'-3/4" that will be the horizontal girts.

8.2 Cut the 9/16" plywood sheet into pieces that measure 2'-7 3/4" x 5'-11 3/4" for the doors as the drawing indicates.

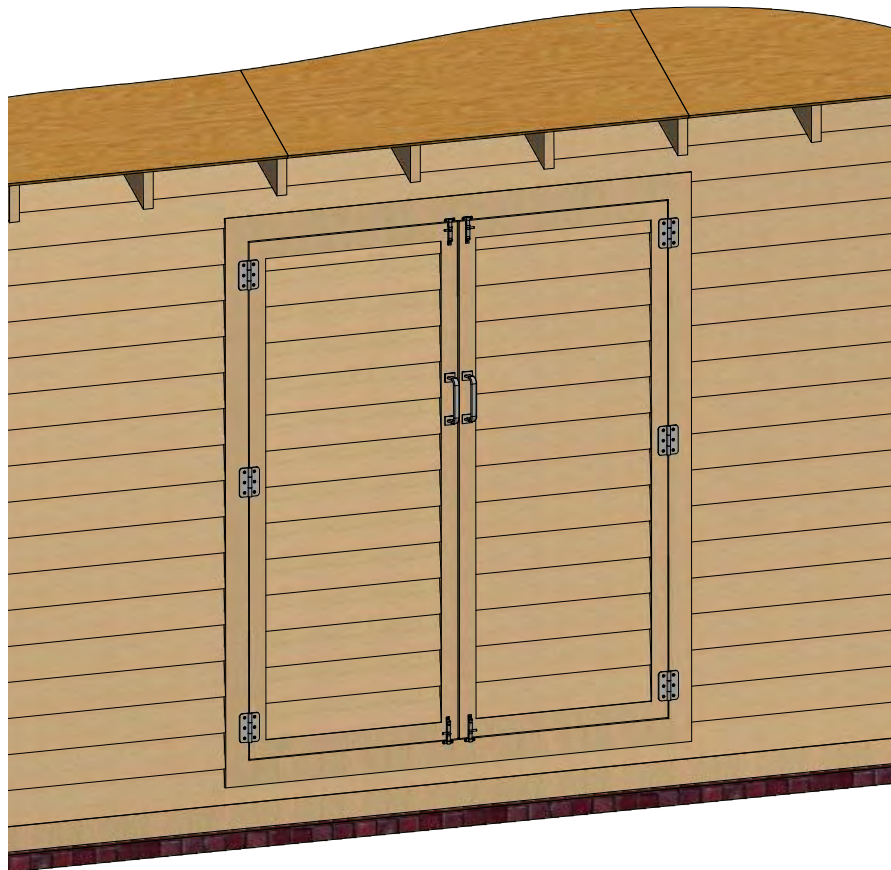
8.3 Use 2 1/2 " x 3/4 " pressure-treated lumber for the door trim and fasten with 2" flat head wood screws. You will need two boards cut to 2'-2 3/4" and two boards cut to 5'-11 3/4".

8.4 Using 1/4 " x 3/4 " pressure-treated lumber, cut and install a starter course 2'-2 3/4" long .

8.5 For the exterior siding on the door, use 1/2 " x 6" wood siding boards. Refer to the illustration below as a guide.

8.6 Assemble siding shields using 2" galvanized nails.

8.7 Install three 3" door hinges using 6x1" wood screws. Finish the installation of the doors by attaching 4" surface bolts and 6" door pulls.



STEP 9

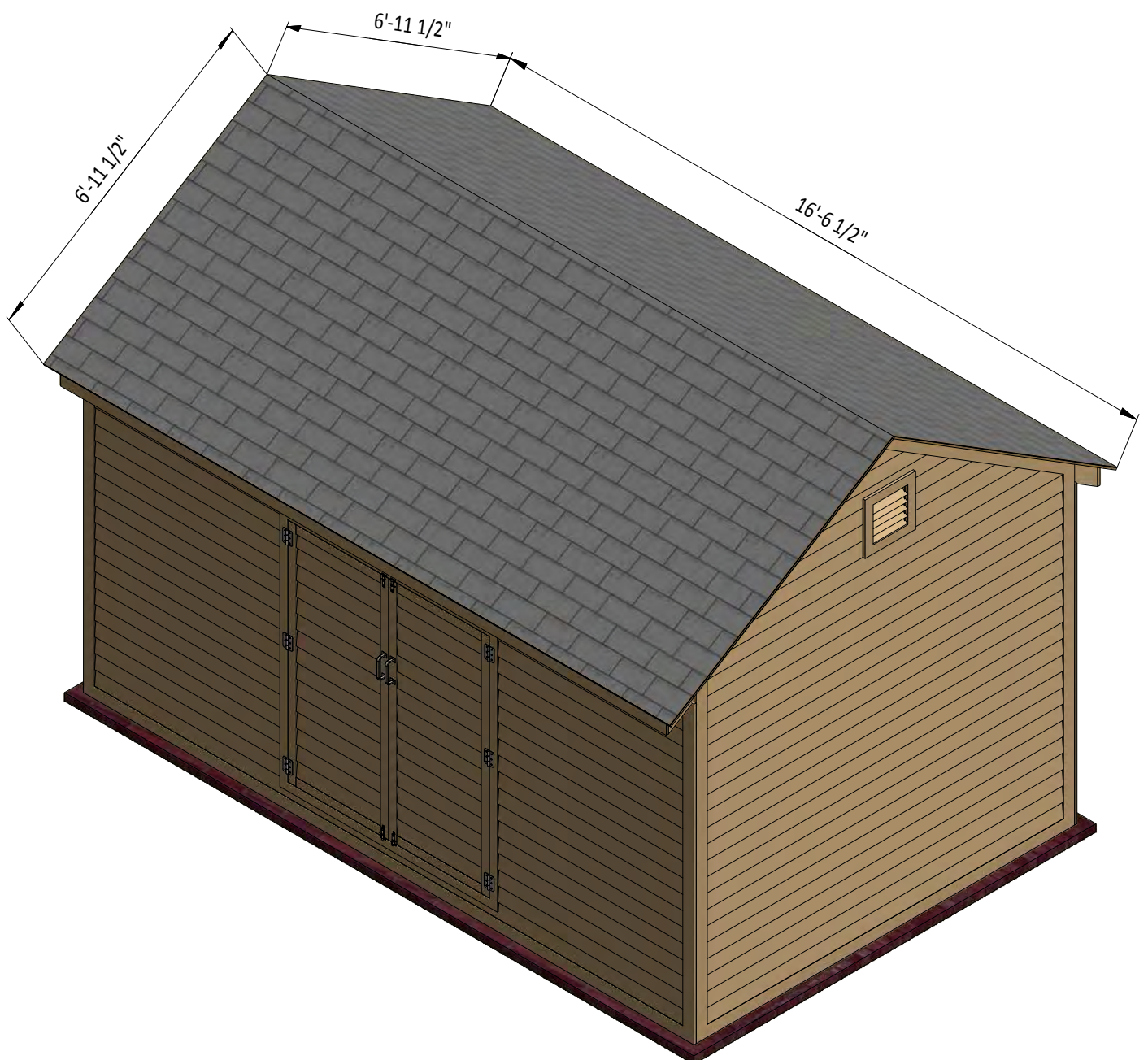
Roof Sheathing Installation

9.1 You will need 300 square feet of asphalt shingle roofing.

9.2 Add the metal drip edge to the fascias.

9.3 Cover the plywood with roofing paper.

9.4 Install asphalt shingle roofing using a hammer and nails or an industrial stapler.



STEP 10

Shed Decoration

Now that your coop is all done, you are ready to decorate it any way you want using your favorite paint, stain, or preservative.



Compare our Free vs. Premium plan

This perfectly designed plan will guide you through the entire process of building your very own shed for any backyard or garden.



Check out the benefits you would get with our **premium edition**:

Features	Free plan	Premium edition
Steps count	10	20
Illustrations for Each Step	✓	✓
Print Ready	✓	✓
Step By Step Instructions	✓	✓
Full Materials and Cuttings List	✗	✓
Additional Illustrations	✗	✓
Additional Blueprints	✗	✓
Tools List	✗	✓
Fastening Elements List	✗	✓
Technical Support	✗	✓

BUY NOW



For more great **HOW-TO** plans please visit: <https://shedplans.org>

Copyright

The text and illustrations that appear here are the exclusive property of shedplans.org and are protected by federal copyright laws. The duplication, sale or distribution of any portion of these plans without prior written consent from the original designer will be subject to the appropriate penalties for copyright infringement. Sharing this plan on the web is only permitted with an indicated original source: <https://shedplans.org>